

Commissioned by the Jubilate Children's Choir of the North Shore - Northfield, Ill.
Beverly Decker-Baar, Music Director

Shine on Me

For SATB* and Piano

Performance Time: Approx. 2:40

Arranged by
ROLLO A. DILWORTH

Traditional Spiritual

Moderate Gospel Swing (♩. = 66)

Piano

mf

Soprano

Alto

Tenor (at pitch)

Bass

6

mf molto espressivo

Shine on me.

mf molto espressivo

4

molto espressivo

Shine on me. I wonder if the light-house will

8

* Available for SATB, SAB, SSA and 2-Part



14

shine on me. Oh, shine on me.

12

Shine on me. I wonder if the light-house will

16

23

Soprano
meno

shine on me. Shine on

Alto

Is a light

Tenor *mp*

Bass Shine!

shine on me.

23

120

me. Oh, shine on me. I

shin-in' a-bove? Is it shin-in' a-bove in the heav-ens for me? I'm

Shine on me. Ah.

24

won - der if the light - house will shine on

won-der-in', won-der-in', won-der-in' if there's a light that is shin-in' a-bove in the heav-ens for

Shine on

27

me. Oh, shine on me. Oh,

me. Oh, is a light shin-in' a-bove? Is it

me. Shine!

31

30

shine on me. I won - der if the
 shin-in' a-bove in the heav-ens for me? I'm won-der-in', won-der-in', won-der-in'
 Shine on me. Ah.

33

light - house will shine on me. Will it shine on
 if there's a light that will shine on me. Will it shine on
 Oh shine on me. Will it shine on

36

40 A Tempo
poco allargando me? Oh! Shine on me. Oh,—
poco allargando me? Oh! Is a light shin-in' a-bove? Is it
poco allargando me, will it shine? Oh! Shine on me.
 (bass only) *più f* *melody*

40 A Tempo
poco allargando *f*

39

shine on me. I won - der if the
 shin-in' a - bove in the heav - ens for me? I'm won - der-in', won - der-in', won - der-in'
 Shine on me. I won - der if the

42

light - house will shine on me. Oh,
 if there's a light that is shin-in' a - bove in the heav - ens for me. Oh,
 light - house will shine on me. Oh,

45

48
 shine on me. Oh, shine on
 is a light shin-in' a - bove? Is it shin-in' a - bove in the heav - ens for
 shine on me. Shine on

48

me. I won - der if the light - house will

me? I'm won-der-in', won-der-in', won-der-in' if there's a light that will

me. I won - der if the light - house will

51

Broaden
ritard to end

shine on me. Will it shine on me?

shine on me. Will it shine on me?

shine on me. Will it shine on me?

Broaden
ritard to end

54

PERFORMANCE NOTES

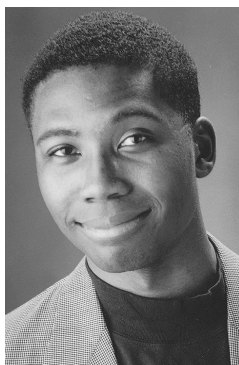
Like many African-American spirituals, the melody of “Shine on Me” is built on a pentatonic scale, and it utilizes a text that has multiple meanings. The original text of this spiritual can be found in the opening chorus:

*Shine on me. Shine on me.
I wonder if the lighthouse will shine on me.*

The second line of the text metaphorically represents a search for guidance and direction on both a physical and a spiritual level. The additional text and melodies in this arrangement are partnered with the original melody so as to create harmonic progressions consistent with the African-American singing tradition.

This arrangement should be performed expressively and with a lilt. Close attention must be given to the rhythmic and stylistic nuances placed in the score. Although each musical line must have its own character, focus must also be given to the harmonies that result when the musical lines are combined.

About the composer:



Rollo A. Dilworth (b.1970, St. Louis, Missouri) is Assistant Professor of Music and Director of Choral Activities and Music Education at the North Park University School of Music in Chicago, Illinois. He recently completed requirements for the Doctor of Music degree in Conducting Performance at Northwestern University, and he holds undergraduate and graduate degrees from Case Western Reserve University and the University of Missouri-St. Louis, respectively.

An award-winning composer and active conductor, educator, and clinician, Dilworth has taught choral music at the elementary, secondary, and university levels. His performing endeavors have taken him to the continents of Europe, Asia, Africa, and Australia. In addition to composing music in the choral genre, his research interests are in the areas of African-American music and music education curriculum and instruction. He is an associate conductor and composer-in-residence for the Jubilate Children's Choir of the North Shore in Northfield, Illinois, and he serves as Minister of Music at Martin Temple African Methodist Episcopal Zion Church in Chicago, Illinois.