

# Bass

# Only Time

Words and Music by Enya,  
Nicky Ryan and Roma Ryan

Ethereal ♩ = 84

4

A



Who can say where the road goes, where the day flows? On-ly  
Who can say why your heart sighs, as your love flies? On ly



8 \_\_\_ time. And who can say if your love grows as your heart chose? On-ly \_\_\_ time.  
\_\_\_ time. And who can say why your heart cries when your love lies? On-ly \_\_\_ time.



13 Dee dah dah day. \_\_\_ Dee dah dah day. \_\_\_ Dee dah day.

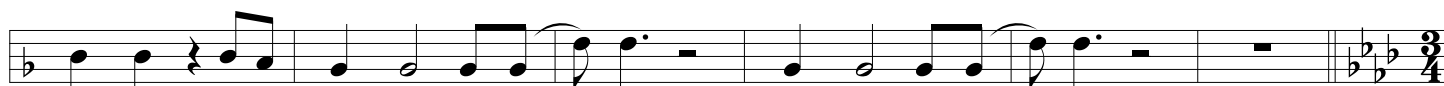


18 Dee dah dah doh dah day. Dah dah doh day. \_\_\_ Dee dah \_\_\_ dah day dah day.

B



22 Who can say when the roads meet that love might be in your \_\_\_ heart? And who can say when the



27 day sleeps if the night keeps all your \_\_\_ heart? Night keeps all your \_\_\_ heart.

C



33 Dee dah dah day. \_\_\_ Dee dah dah day \_\_\_ Dee dah dah day. \_\_\_ Dee dah dah dah

D



40 oh. \_\_\_ Who can say if your love grows as your heart chose? On-ly \_\_\_ time. And



46 who can say where the road goes, where the day flows? On-ly \_\_\_ time. Who knows? On-ly



51 \_\_\_ time. Who knows? On - ly \_\_\_ time. \_\_\_ Ah.